

Increase Chart for Alia

Small: Work columns 1-19 and column 24.

Medium: Work columns 1-21 and column 24.

Large: Work columns 1- 24.

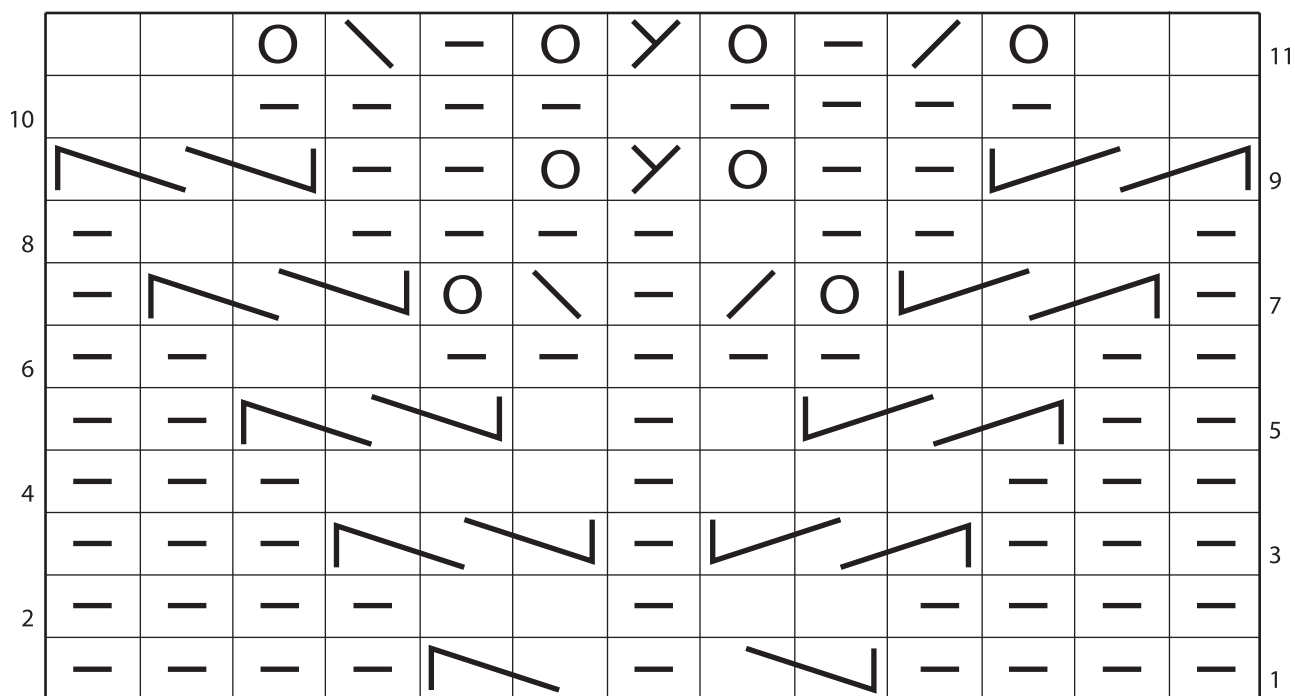
	1	2	3	4	5	6	7	8	9	10	11	12	13	14	15	16	17	18	19	20	21	M & L only 22	L only 23	All sizes 24	
Row 9	2 1	2 1	3 1	2 1	3 1	2 1	3 1	3 1	2 1	3 1	2 1	3 1	3 1	2 1	3 1	2 1	3 1	3 1	2 1	3 1	2 1	3 1	2 1	2 1	2
Row 13	2 1	3 1	3 1	3 1	3 1	3 1	3 1	4 1	3 1	3 1	3 1	3 1	4 1	3 1	3 1	3 1	3 1	4 1	3 1	3 1	3 1	3 1	3 1	3 1	2
Row 17	2 1	4 1	4 1	3 1	4 1	3 1	4 1	4 1	4 1	4 1	3 1	4 1	4 1	4 1	4 1	3 1	4 1	4 1	4 1	4 1	4 1	3 1	4 1	4 1	2

The 1 stitch columns are always in CC. All other columns are in MC.

To increase from 2 st to 3 st: k1, LLinc, k1.

To increase from 3 to 4 st: k2, LLinc, k1.

Yes, column 24 is correct.



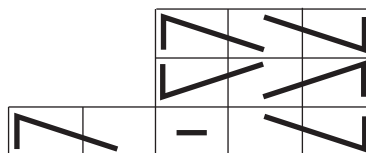
Arched Lace Chart for Alia

design © Angela Boyle 2008
 downloaded from <http://theanticroft.com>

Key

	k on RS, p on WS
	p on RS, K on WS
	yo

	k2tog
	ssk
	sl1, k2tog, pss0



sl1 to sn and hold in back, k2, p1 from cn
 sl2 to cn and hold in front, p1, k2 from cn
 sl3 to cn and hold in back, k2, (p1,k2) from cn